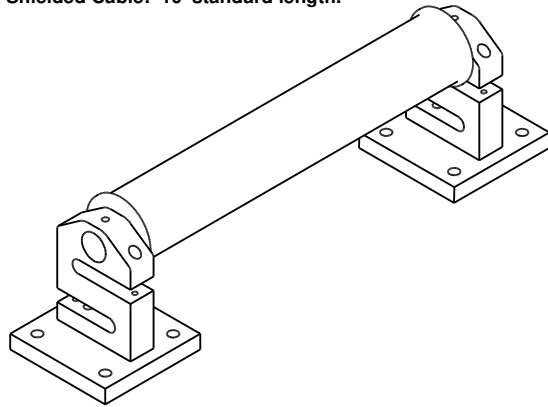
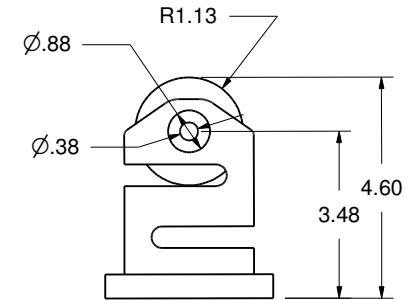
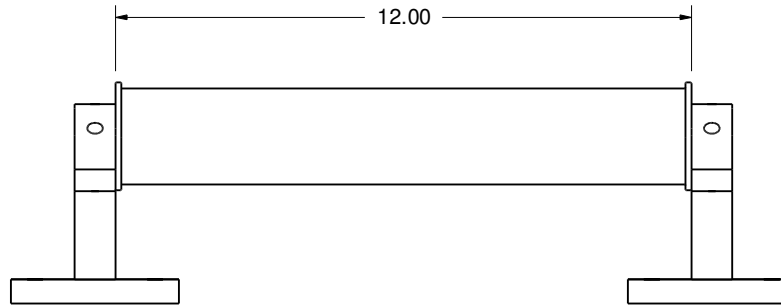
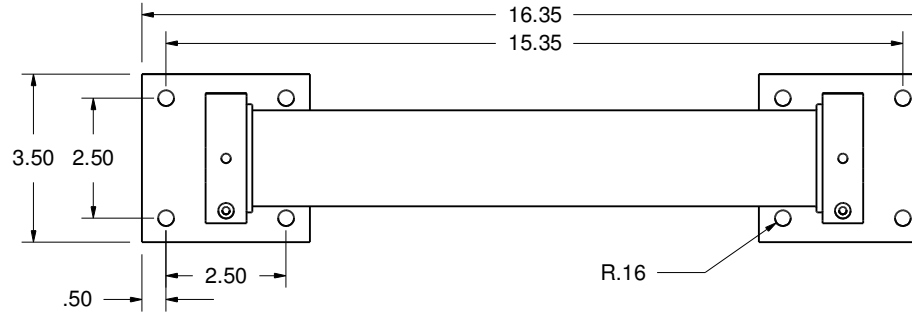


Typical Transducer Specifications

- *Tension Range: Supplied to Customer's requirements.
- *Contact Elements: To fit application.
- *Operating Temperature: 70 ± 25° F. (Special ranges available)
- *Connecting Terminals: 5 pin Amphenol plug or terminated ends.
- *Excitation Voltage: 4-10 VDC.
- *Bridge Resistance: 350 ohms nominal.
- *Output Signal: 1.0 - 2.0 mv/V nominal.
- *Resistance to Ground: Exceeding 500 Megaohms.
- *Zero Balance: Less than 1.5% FS
- *Drift at Midpoint: 0.2%
- *Noise Level: Less than 0.2%
- *Linearity: 0.5%
- *Combined Linearity & Hysteresis: ± .75%
- *Total Error: 1% FS
- *Overload Tension: 50% Overated
- *Shielded Cable: 10' standard length.




TYPICAL APPLICATION SHOWING 2, LOAD CELLS ASSEMBLED WITH PILLOW BLOCKS AND 12" LONG X 2-1/4" Ø ROLLER.



| Revision History | |
|------------------|---|
| Zone | Rev. Description Date Approval |
| N/A | 1 MODELED AND REDRAWN 7-29-14 M. BROCKMAN |

Application Note:

Roller configuration adjustable to meet specific applications. For optimum accuracy evenly guide material over pulley with a minimum wrap angle of 12°. For best accuracy keep wrap angle as consistent as possible.

| | | | | | | | | |
|---|-------------|-------|-------|--|--------------|---|----------------|-----|
| Material ALUMINUM | | | | Finish ANNODIZE | | Heat Treat | | |
| DIMENSIONAL TOLERANCES UNLESS OTHERWISE SPECIFIED | | | | TITLE | | Weight | | |
| .XXXX | .XXX | .XX | ANGLE | S COLUMN WEB TRANSDUCER WITH TWO LOAD CELLS, 12" LONG X 2 1/4" DIA ROLLER. | |  733 South Bowen Street Longmont, CO 80501 | | |
| ± .0005 | ± .005 | ± .01 | ± 1° | | | | | |
| Scale | No. Req'd 1 | | | | | | | |
| Next Assy | | Date | | Drawn M. BROCKMAN | Date 7-29-14 | Size | Drawing Number | REV |
| | | Date | | Checked | Date | | E-210 | 1 |
| | | Date | | Approved | Date | | | |